



# Dinàgà Wek'èhodi

## Candidate Area



### December 2010

The Dinàgà Wek'èhodi Working Group was established.

### March 2016

Assessments of the area's ecological, cultural and economic values have been completed and a work group report finalized.

### October 9th 2018

A surface and subsurface interim land withdrawal exists for Dinàgà Wek'èhodi.

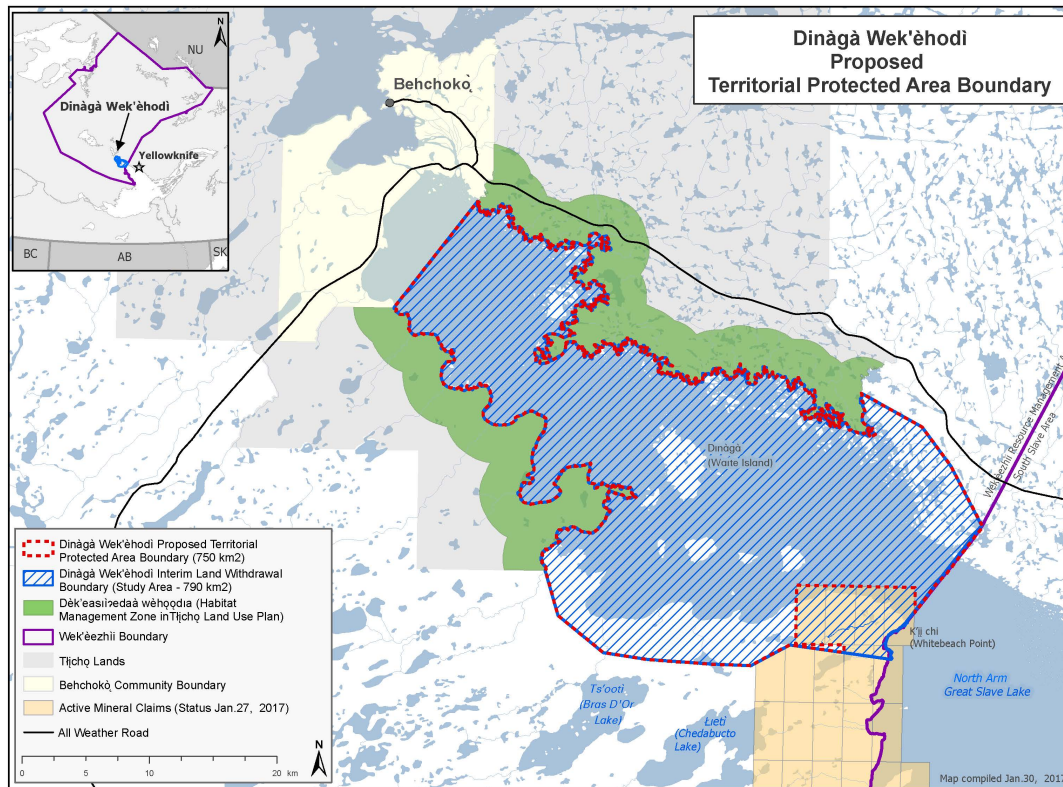
Dinàgà Wek'èhodi is an area of approximately 750 km<sup>2</sup> of the northern portion of the north arm of Great Slave Lake and includes the mainland shoreline, numerous islands and the water of the lake itself.

Dinàgà Wek'èhodi has powerful historical, spiritual and cultural significance. It is a home—a place of legends, sharing, teaching and learning.

The area is important for migratory birds and provides habitat for other birds, fish and wildlife, including species at risk. The rich flora and fauna are the foundation of this spectacular natural environment with many harvesting and recreational opportunities.

Cooperative management of a protected area will ensure all people have the opportunity to respect and enjoy this unique area for generations.

## Dinàgà Wek'èhodì Candidate Area



### Next Steps

- Collaborative discussions on the establishment of Dinàgà Wek'èhodì using territorial legislation are ongoing.
- The GNWT is committed to working directly with Aboriginal governments and organizations, key stakeholders and the public throughout the establishment process.

### Why is it important?

- Dinàgà Wek'èhodì (formerly Kwets'ootl'àà) was identified for protection by the Tìchò Government.
- The area is culturally important to the Dene and Métis who have used the area for centuries for many activities including hunting and fishing.
- The area hosts several species at risk including boreal woodland caribou, wood bison, wolverine, rusty blackbird, common nighthawk, barn swallow and short-eared owl.
- Dinàgà Wek'èhodì is classified as an Important Bird Area (IBA) in Canada and is a key migratory bird site in the Northwest Territories. Large numbers of tundra swans, Canada geese and other waterfowl use it as a staging area.
- Dinàgà Wek'èhodì contains Canada's northernmost recorded breeding range of caspian and black terns.
- Dinàgà Wek'èhodì is a popular area for fishing and hunting, outfitting, ecotourism and recreation.

For more information please contact [conservationplanning@gov.nt.ca](mailto:conservationplanning@gov.nt.ca)

[www.enr.gov.nt.ca](http://www.enr.gov.nt.ca)